



S. CHESTER AVENUE

PROPERTY OVERVIEW

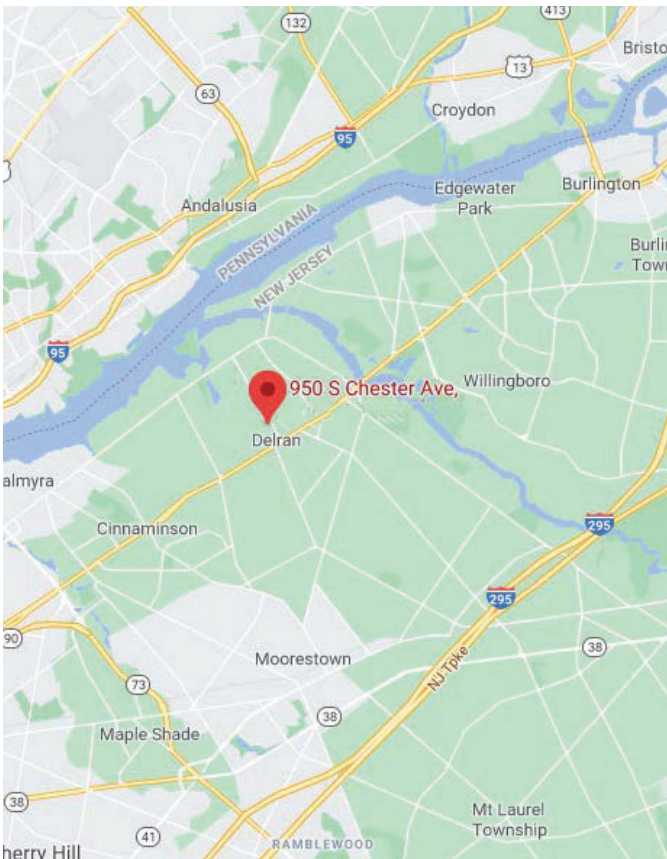
- 21,000 SF, two building, single-story office complex.
- Building A: 9,800 SF; Building B: 11,200 SF
- Recently Renovated with beautiful landscape grounds.
- Close and easy parking for both buildings.
- Close distance to many amenities along Route 130.
- Less than 10 minutes to Exit-40, I-295

15 MINUTE DRIVE TIME

- | | |
|---------------------------|---------------|
| • Population | 209,548 |
| • Median Household Income | \$78,426 |
| • Medical Spending | \$250,773,772 |

CONTACT

Brian Sherlock
brian@dtspade.com
856.296.2229

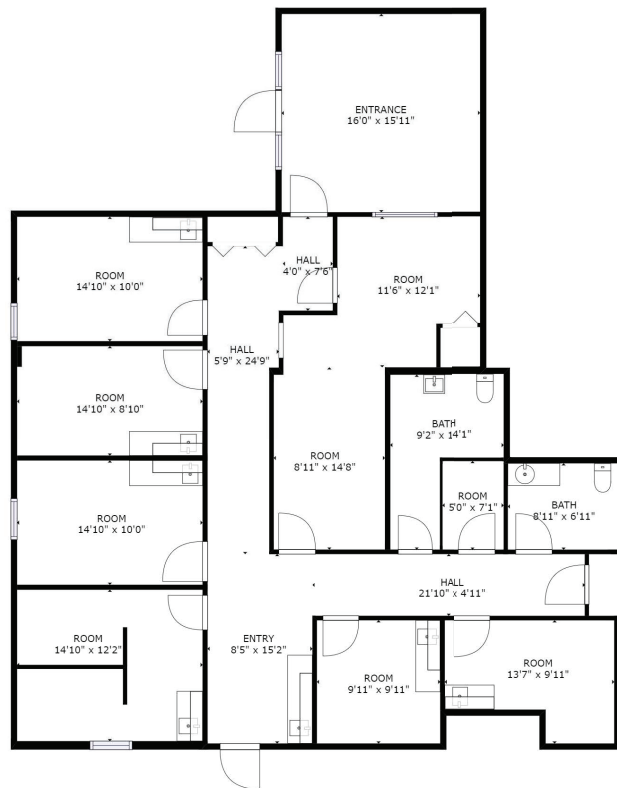


People Count. Location Matters. Find Your Place.

1635 MARKET STREET SUITE 1600 PHILADELPHIA, PA 19103 267.521.1200

DTSPADE.COM

No warranty or representation, express or implied, is made as to the accuracy of the information contained herein, and same is subject to errors, omissions, change of price, rental or other conditions, withdrawal without notice, and to any special listing conditions imposed by our principals.



Building A: Suite 100

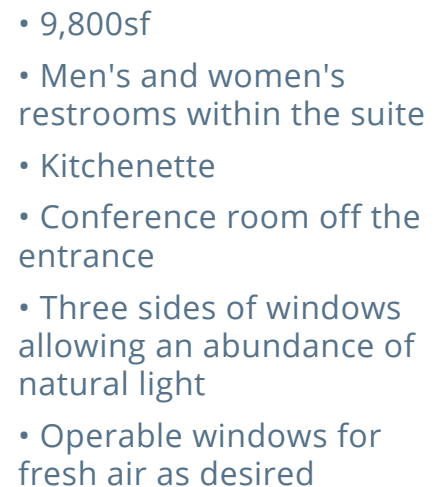
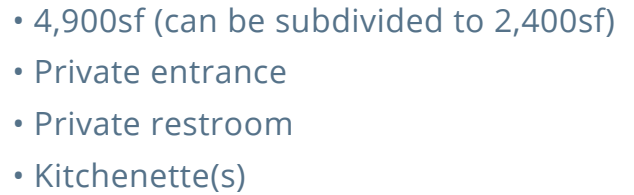
- 2,500sf
- Fit-out medical space (former Jefferson Health practice)
- Private entrance
- Men's and women's restrooms within the suite

People Count. Location Matters. Find Your Place.

1635 MARKET STREET SUITE 1600 PHILADELPHIA, PA 19103 267.521.1200

DTSPADE.COM

No warranty or representation, express or implied, is made as to the accuracy of the information contained herein, and same is subject to errors, omissions, change of price, rental or other conditions, withdrawal without notice, and to any special listing conditions imposed by our principals.



Building B

- People Count. Location Matters. Find Your Place. -

1635 MARKET STREET SUITE 1600 PHILADELPHIA, PA 19103 267.521.1200

DTSPADE.COM

No warranty or representation, express or implied, is made as to the accuracy of the information contained herein, and same is subject to errors, omissions, change of price, rental or other conditions, withdrawal without notice, and to any special listing conditions imposed by our principals.